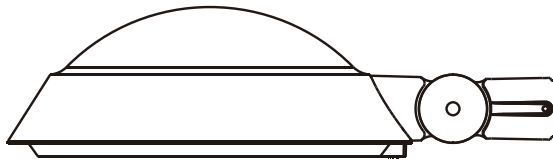


IMPORTANT: Please read carefully before installation and retain for future reference.

MODEL

D-34



1: Concept:

LED lights with environmental pollution, low power consumption, high luminous efficiency, long life and other characteristics, therefore, LED lights will become the best choice for energy conservation.

high luminous efficiency, pure aluminum heat dissipation structure, air convection structure, modularization.

Street lighting series high bay are suitable for using in the following facilities:

- Main road, secondary road, slip road
- school
- factory
- city square
- garden

2: Installation**⚠ Warning:**

This product must be installed in accordance with the applicable installation code by a person familiar with the construction and operation of the product and the hazards involved consult a qualified electrician to ensure correct branch circuit conductor.

⚠ Warning:

To avoid electric shock:

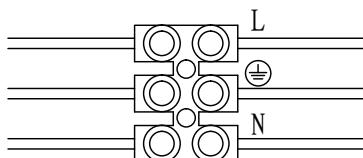
- Be certain electrical power is OFF before and during installation and maintenance.
- Luminaire must be connected to a wiring system with an equipment-grouping conductor.

⚠ Warning:

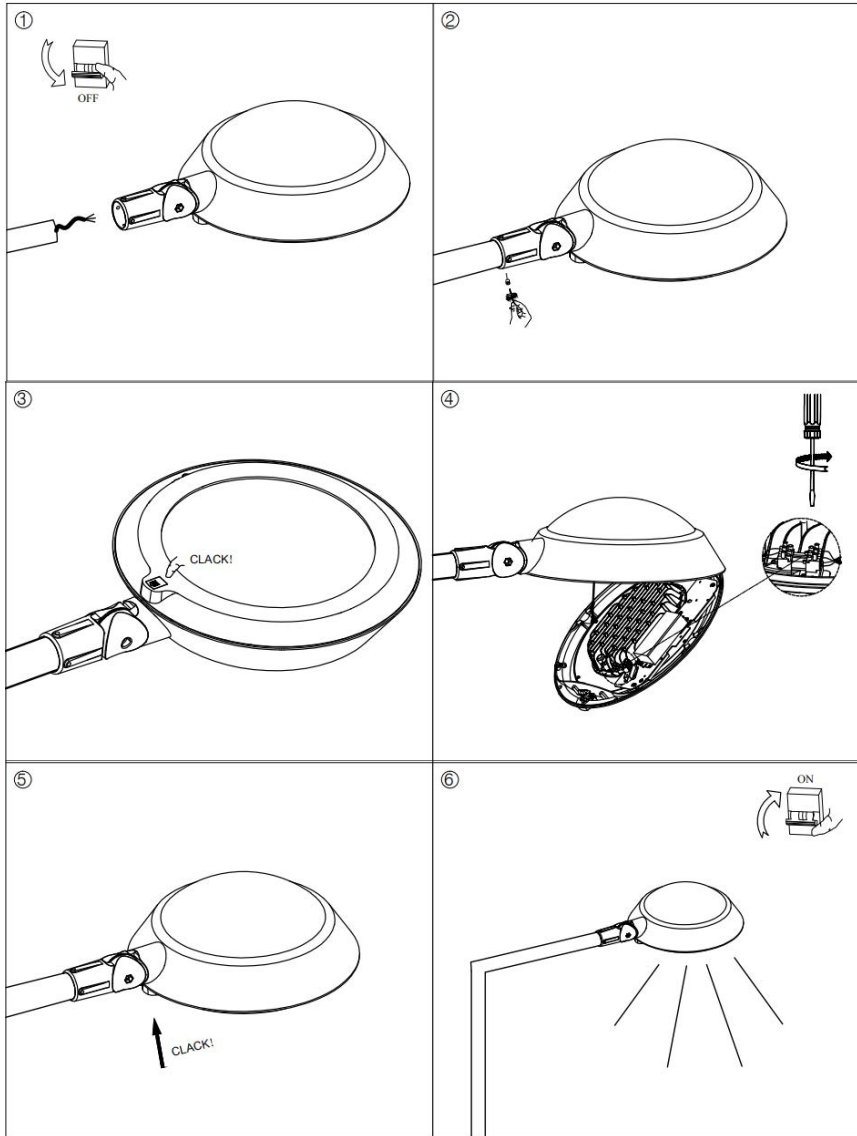
- Make sure the supply voltage is the same as the rated luminaire voltage.
- Do not operate in ambient temperatures outside those indicated on the nameplate.

• Connect power cable conductors as following:

- ◆ Green wire connects to Safety Ground.
- ◆ White wire connects to Neutral.
- ◆ Black wire connects to Live.
- Restore power and verify operation.



Installation



WARNING: TO AVOID FIRE, SHOCK OR POSSIBLE INJURY, TURN OFF POWER AND TEST THAT THE POWER IS OFF BEFORE INSTALLATION.

NOTE: PLEASE MAKE SURE THE LAMP INSTALLATION IS SUITABLE FOR THE ILLUMINATION OF THE INTENDED AREA.

Product Parameters

Model	D-34
Operating Voltage	AC 100-240V 50/60HZ
Power Efficiency	>90%
Power Factor	0.95
Fodules	Driver D-34 XLG-100-L-A
System Power	D-34 100W
Luminous Efficacy of Lights	>90 lm/W
Temperature of Junctions(TJ)	<70℃
LED Current	D-34:980mA
Color Temperature	3000□7000 K
CRI	>Ra70
Lighting Source	LUXEON 5050
Working Environment	-40C~+35C, 10%~90%RH
Storage Temperature	-35C~+45C
LED life span	>50000 Hours
Body and shell materials	Aluminum Alloy
Dimensions(mm)	D-34 575*575*245
Surge Voltage	10KV
Net Weight	D-34 14.3KG
Certificates	ETL
IP Protection Grade	Wet loaction